

## North Cumbria University Hospitals NHS Trust Monthly Bulletin: October 2010 to September 2011

### Monthly Bulletin: October 2010 to September 2011

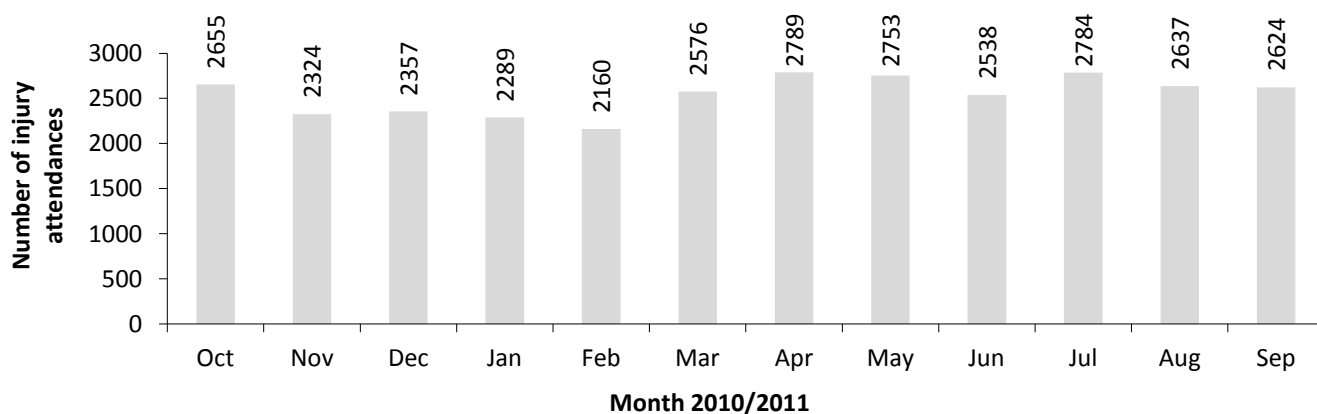
This bulletin provides a breakdown of all attendances at North Cumbria University Hospitals NHS Trust emergency departments (EDs) between October 2010 and September 2011.

Please note, in late 2009 North Cumbria University Hospitals NHS Trust EDs changed their IT system. As a result a number of the data collection fields changed, meaning certain injury categories are no

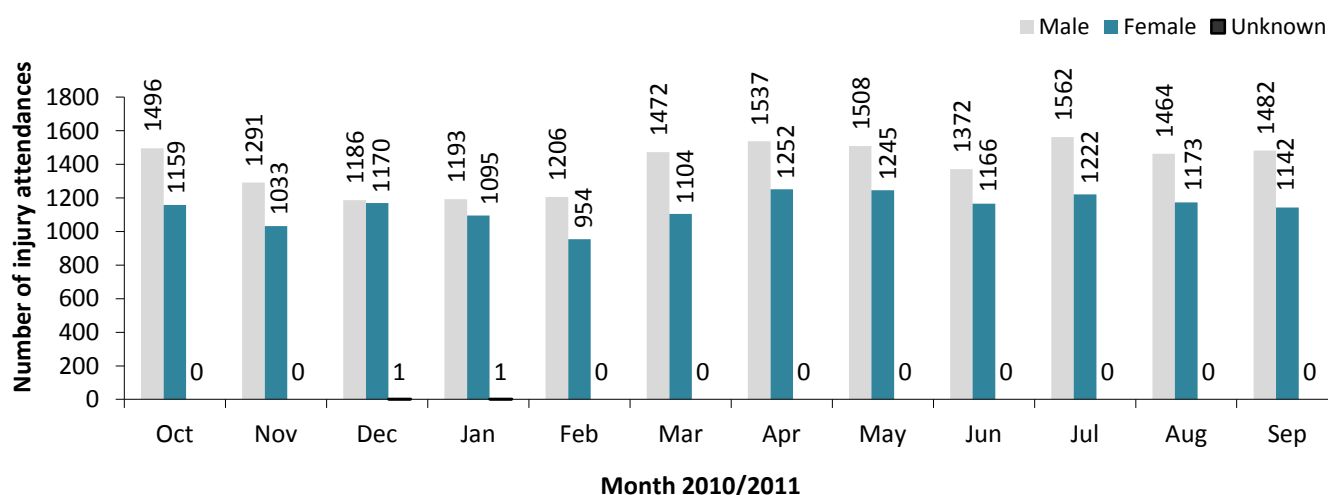
longer collected (e.g. falls). This change has led to a reduction in the number of recorded ED injury attendances, and therefore all figures presented here should be viewed with caution.

The following tables and figures provide details of these attendances by month including: total numbers; patient age and gender; injury type; referral method; incident location; and disposal.

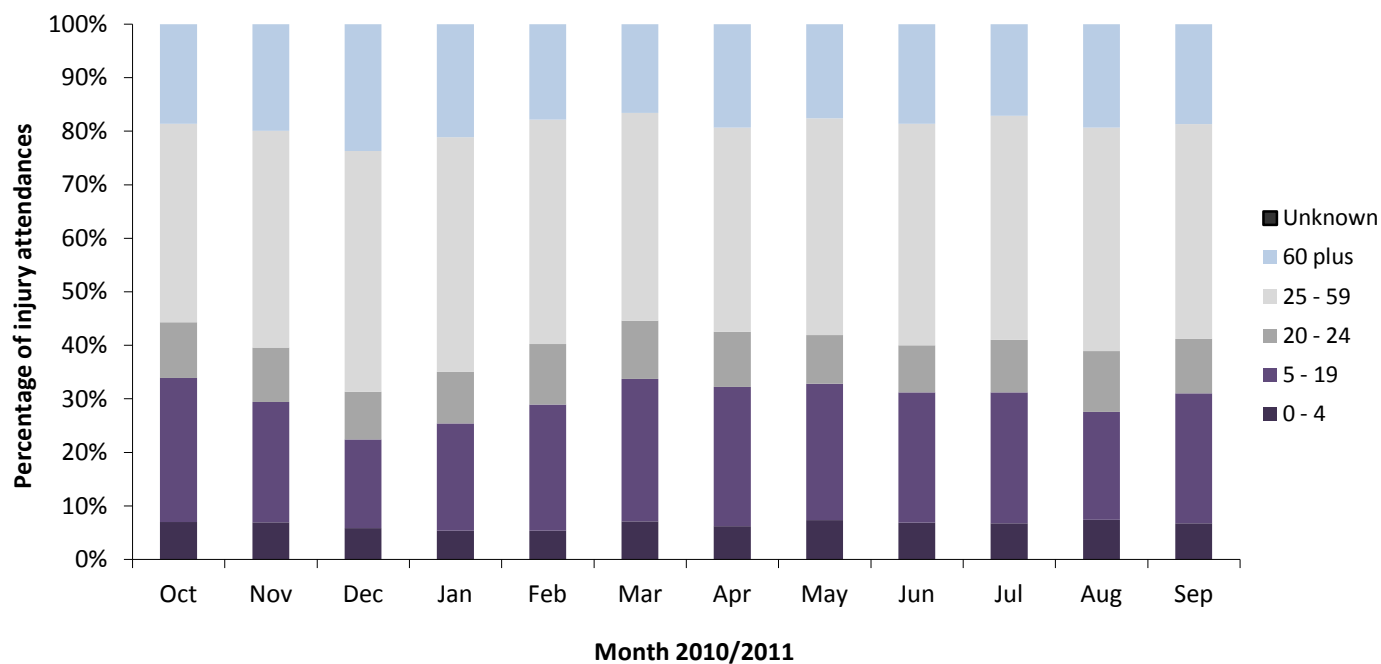
**Figure 1: Total number of ED injury attendances by month, October 2010 to September 2011**



**Figure 2: Gender of ED injury attendances by month, October 2010 to September 2011**



**Figure 3: Age group of ED injury attendances by month, October 2010 to September 2011**



**Table 1: ED injury attendances by injury group and month, October 2010 to September 2011<sup>1</sup>**

Injury group	Oct	Nov	Dec	Jan	Feb	Mar	Apr	May	Jun	Jul	Aug	Sep	Total	%
Other injury	1929	1727	1886	1742	1551	1874	2094	2082	1918	2215	1994	1894	22906	75
Sports injury	308	230	56	183	256	337	300	267	205	189	184	322	2837	9
Road traffic collision	159	163	190	156	139	129	160	153	159	120	176	180	1884	6
Assault	125	104	130	130	97	130	124	105	120	132	149	107	1453	5
Deliberate self-harm	134	100	95	78	117	106	111	146	136	128	134	121	1406	5
<b>Total</b>	<b>2655</b>	<b>2324</b>	<b>2357</b>	<b>2289</b>	<b>2160</b>	<b>2576</b>	<b>2789</b>	<b>2753</b>	<b>2538</b>	<b>2784</b>	<b>2637</b>	<b>2624</b>	<b>30486</b>	<b>100</b>

**Table 2: ED injury attendances by source of referral and month, October 2010 to September 2011<sup>2,3,4</sup>**

Source of referral	Oct	Nov	Dec	Jan	Feb	Mar	Apr	May	Jun	Jul	Aug	Sep	Total	%
Self referral	1703	1486	1503	1465	1396	1724	1872	1816	1643	1827	1717	1697	19849	65
Emergency services	597	533	572	496	485	472	571	550	562	562	570	561	6531	21
GP	99	84	92	87	66	119	98	126	107	96	106	95	1175	4
Other	63	66	68	59	55	72	97	89	71	90	94	66	890	3
Work	70	75	56	72	61	83	61	57	57	81	75	103	851	3
Health care provider: same or other	48	29	35	41	40	34	33	53	35	60	48	58	514	2
Educational establishment	39	31	<7	46	38	40	23	39	31	30	***	25	348	1
Police	35	19	22	22	19	31	33	21	31	36	27	18	314	1
Local authority social services	***	***	***	***	***	***	***	***	***	***	***	***	<11	0
General Dental Practitioner	***	***	***	***	***	***	***	***	***	***	***	***	***	0
<b>Total</b>	<b>2655</b>	<b>2324</b>	<b>2357</b>	<b>2289</b>	<b>2160</b>	<b>2576</b>	<b>2789</b>	<b>2753</b>	<b>2538</b>	<b>2784</b>	<b>2637</b>	<b>2624</b>	<b>30486</b>	<b>100</b>

<sup>1</sup> Due to a change in IT system at North Cumbria EDs, industrial and domestic injury group data are not collected from November 2009.

<sup>2</sup> Please note percentages might not add to one hundred due to rounding.

<sup>3</sup> GP=general practitioner.

<sup>4</sup> Please note that all numbers less than five have been suppressed (with \*\*\*) in line with patient confidentiality; and if there is only one number less than five in a category then two numbers will be suppressed to prevent back calculations from totals.

**Table 3: ED injury attendances by location of incident and month, October 2010 to September 2011<sup>5</sup>**

Location	Oct	Nov	Dec	Jan	Feb	Mar	Apr	May	Jun	Jul	Aug	Sep	Total	%
Home	1109	1006	958	998	913	1119	1259	1225	1075	1197	1137	1084	13080	43
Other	1047	874	988	895	857	975	1131	1053	1044	1084	1104	1073	12125	40
Public place	203	187	251	157	168	171	250	251	202	252	254	223	2569	8
Work	155	140	105	104	107	143	99	119	109	152	137	125	1495	5
Educational establishment	141	117	55	135	115	168	50	105	108	99	5	119	1217	4
<b>Total</b>	<b>2655</b>	<b>2324</b>	<b>2357</b>	<b>2289</b>	<b>2160</b>	<b>2576</b>	<b>2789</b>	<b>2753</b>	<b>2538</b>	<b>2784</b>	<b>2637</b>	<b>2624</b>	<b>30486</b>	<b>100</b>

**Table 4: ED injury attendances by disposal and month, October 2010 to September 2011**

Disposal	Oct	Nov	Dec	Jan	Feb	Mar	Apr	May	Jun	Jul	Aug	Sep	Total	%
Discharged - no follow-up treatment	1584	1381	1153	1160	1072	1362	1506	1442	1276	1480	1505	1690	16611	54
Referred to other out-patient clinic	392	332	461	354	341	413	449	456	381	444	339	303	4665	15
Admitted to hospital bed of the same health care provider	320	275	339	293	292	285	352	359	360	333	329	316	3853	13
Discharged - follow-up treatment by GP	95	102	177	247	246	256	199	208	239	218	91	83	2161	7
Referred to ED clinic	100	121	96	96	96	120	107	138	112	129	203	121	1439	5
Left department before being treated	79	42	67	64	45	65	82	67	81	68	77	46	783	3
Referred to other health care professional	54	39	41	42	39	44	68	56	52	67	67	36	605	2
Transferred to other health care provider	20	14	10	21	16	11	14	9	15	22	16	17	185	1
Left department having refused treatment	5	7	***	8	7	12	10	13	9	14	5	<6	99	0
Other	<6	<11	6	***	<6	<8	***	<6	<12	<10	***	6	73	0
Died in department	***	***	***	***	***	***	***	***	***	***	***	***	12	0
<b>Total</b>	<b>2655</b>	<b>2324</b>	<b>2357</b>	<b>2289</b>	<b>2160</b>	<b>2576</b>	<b>2789</b>	<b>2753</b>	<b>2538</b>	<b>2784</b>	<b>2637</b>	<b>2624</b>	<b>30486</b>	<b>100</b>

Published December 2011  
 Johnathan Rooney (TIIG Officer)  
 Centre for Public Health, Liverpool John Moores University, 2nd Floor, Henry Cotton Campus, Liverpool, L3 2ET  
 Tel: 0151 231 4513 Email: j.rooney@ljmu.ac.uk  
 Website: [www.tiig.info](http://www.tiig.info) (please note data requests should be made through the website)

<sup>5</sup> Educational establishment includes: educational establishment; school other; school; school playground; and, school sport. Public place includes public place and playing out.